



SEA TURTLE CONSERVATION IN SURINAME THEN AND NOW



2019 ANNUAL GENERAL MEETING

Paramaribo Suriname

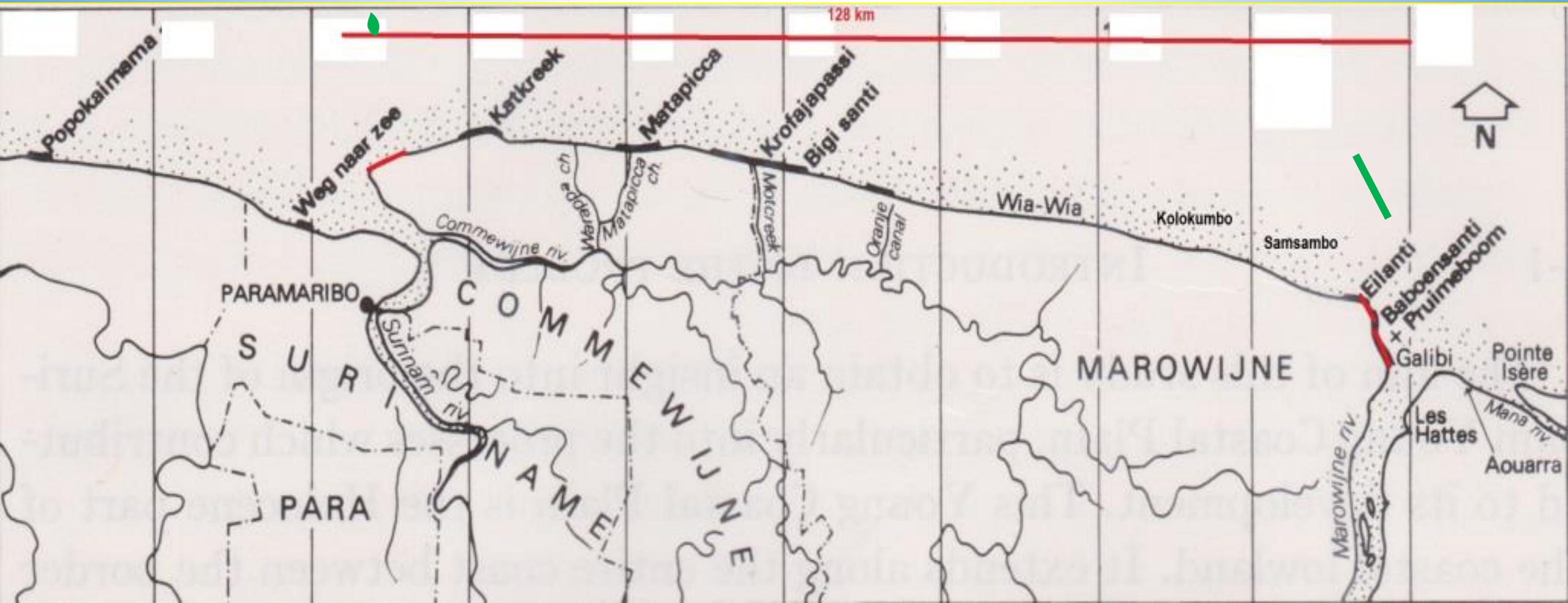
19-21 March 2019

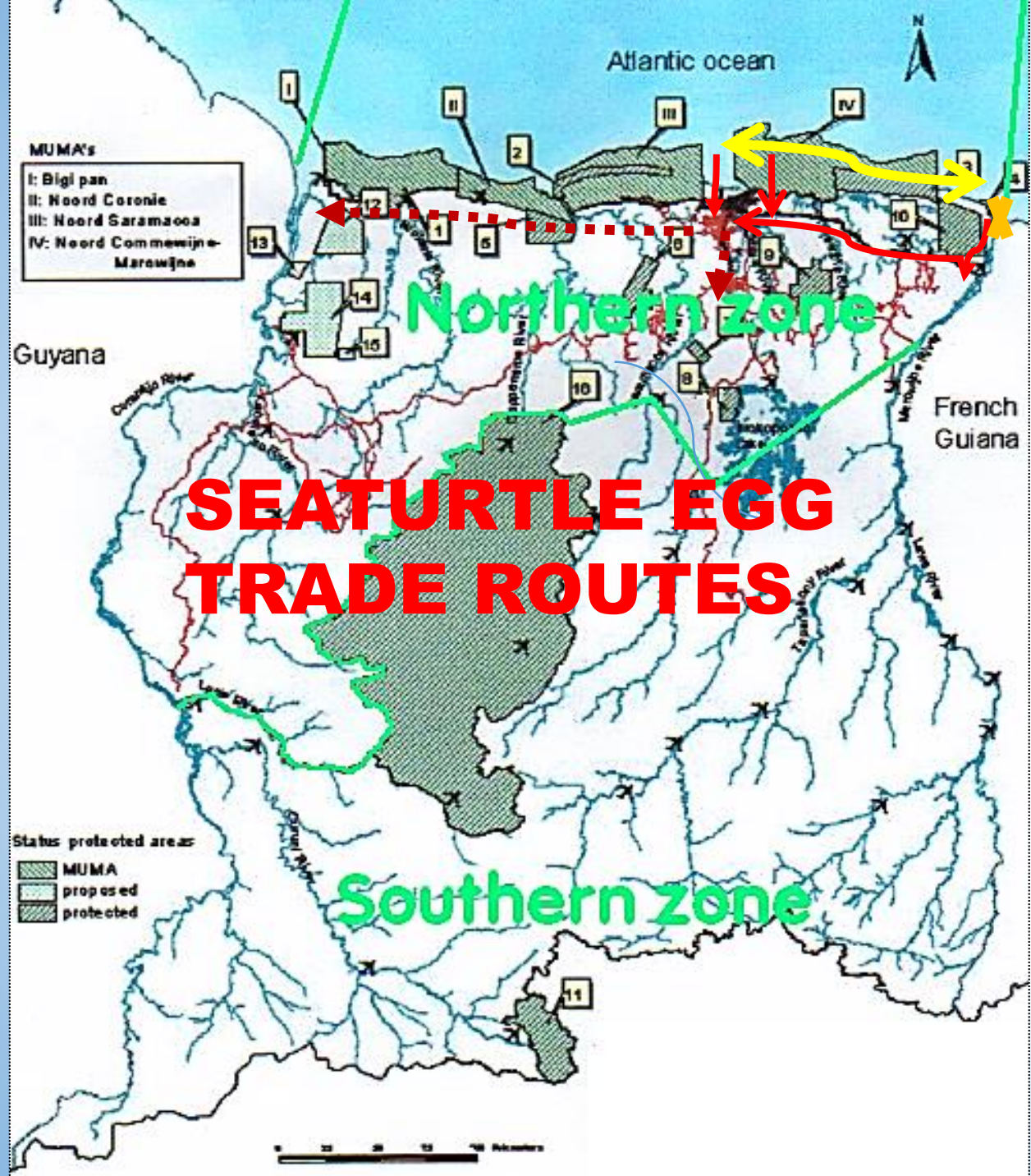
Roy Ho Tsoi / Loor Katidjo

Nature Conservation Division

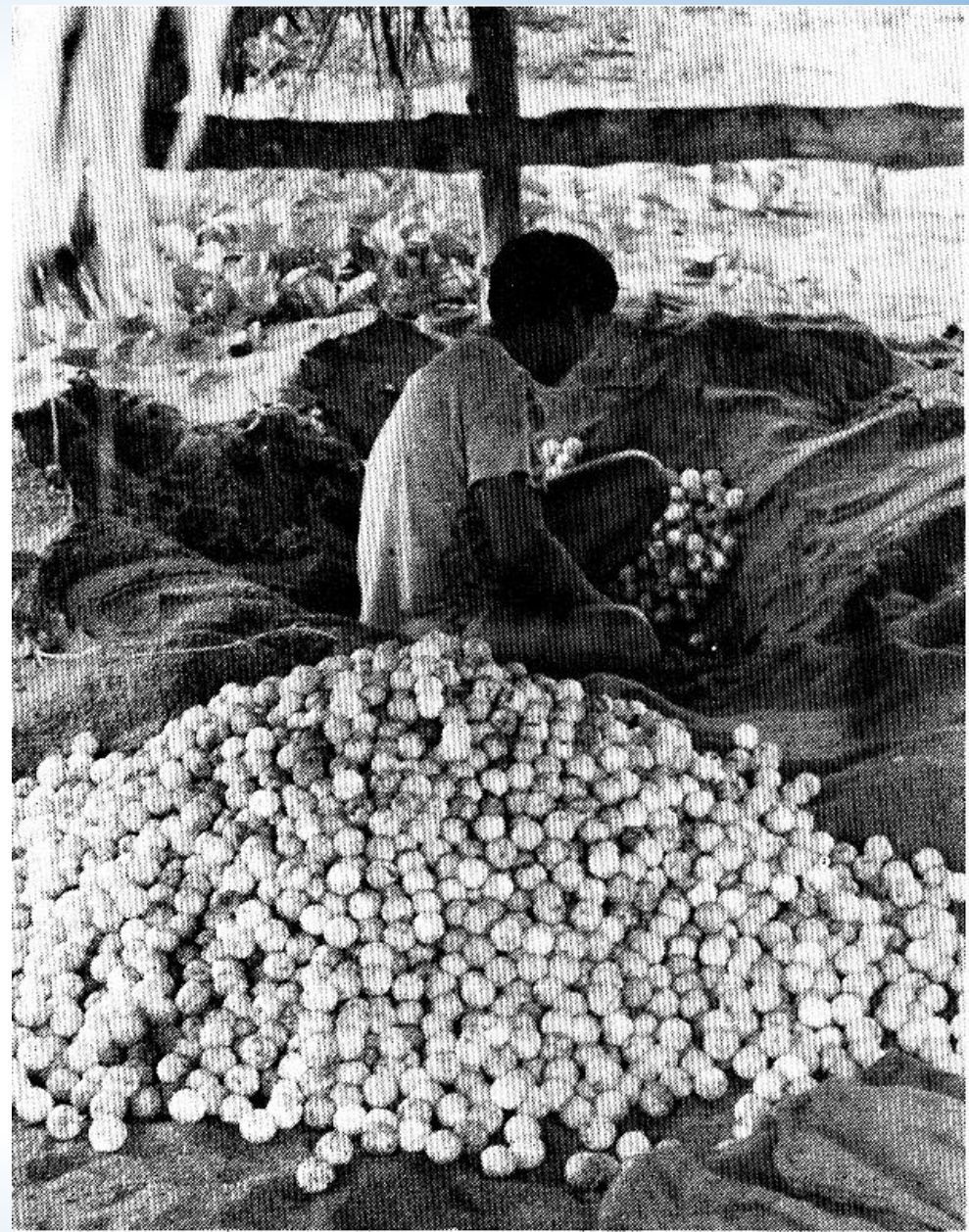
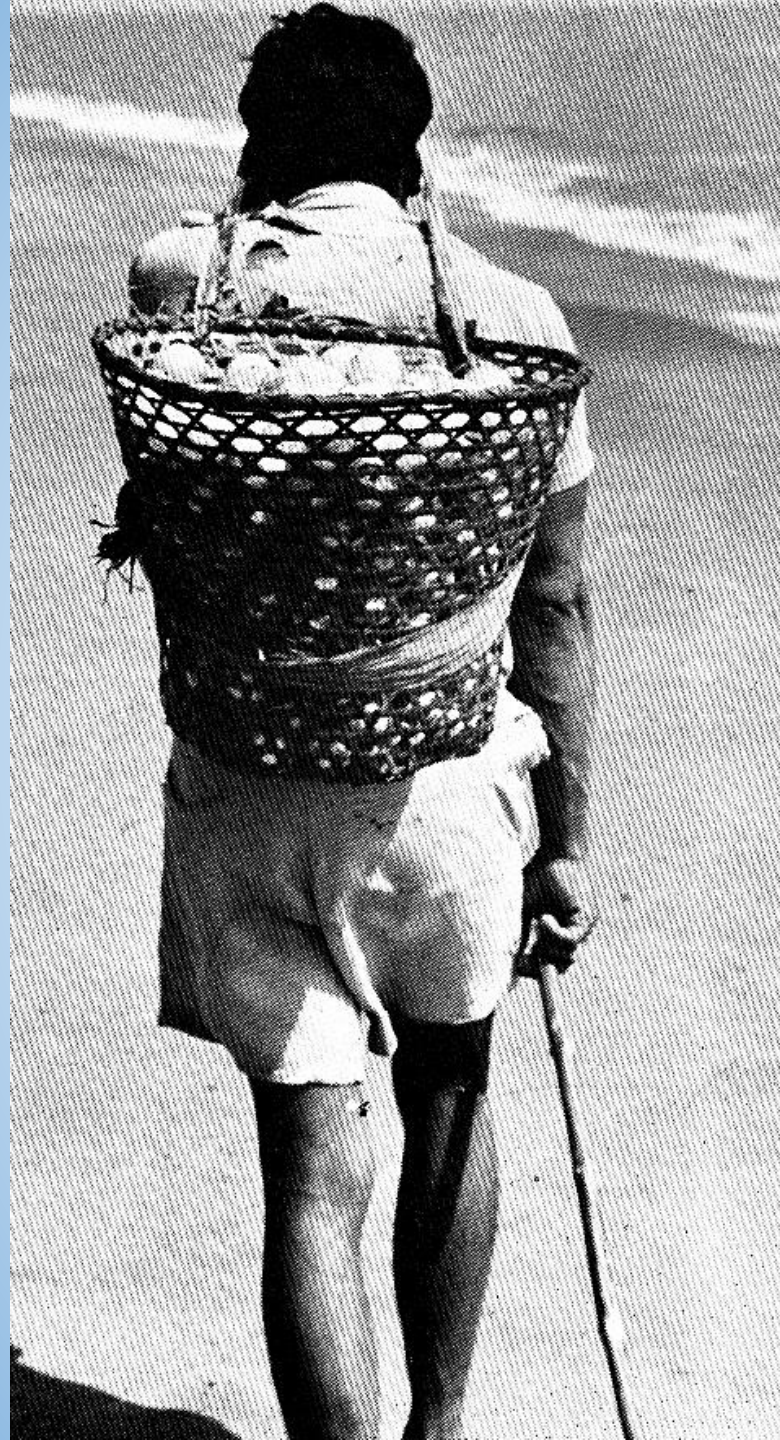
HISTORY HIGHLIGHTS

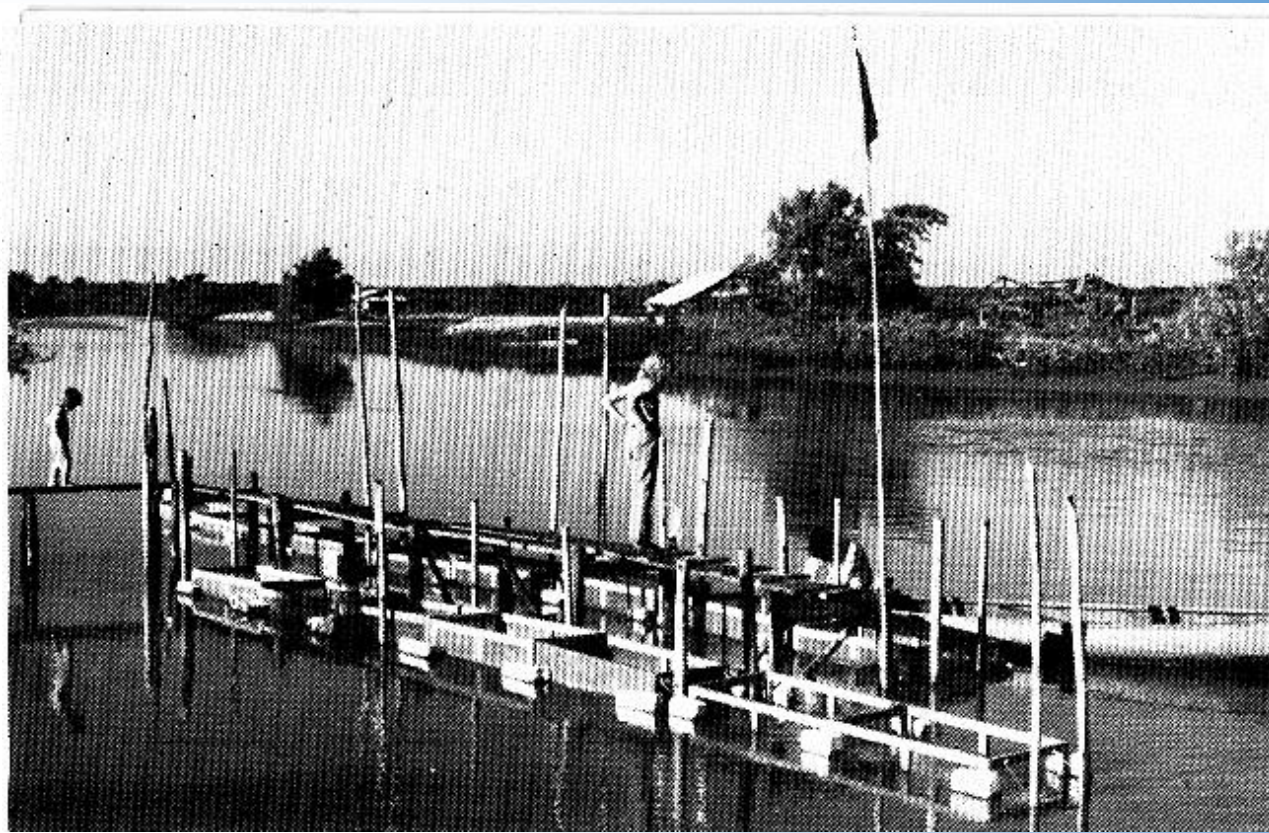
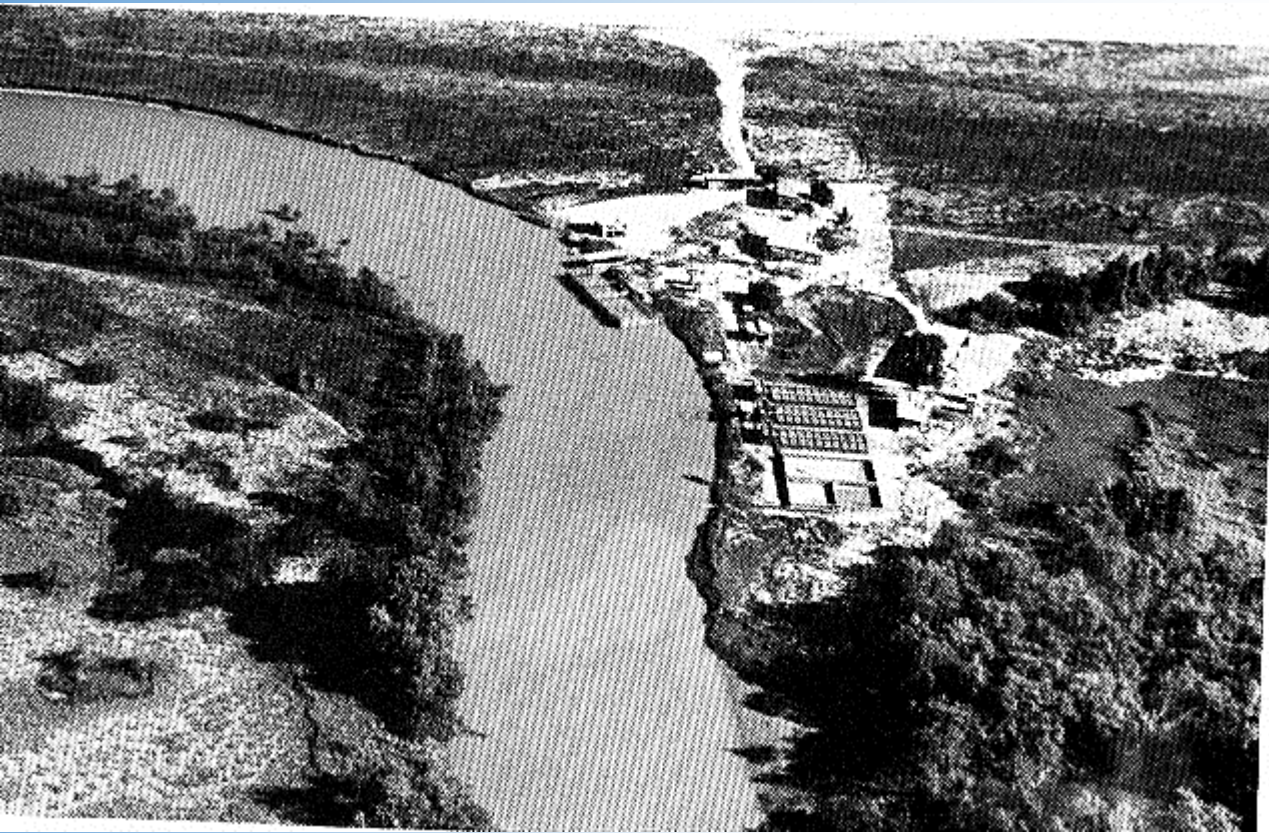
- **FIRST WRITTEN REPORT MAY 20TH 1786**
- **1796 STEDMAN REPORTS PUBLIC MEAT TRADE**
- **1883 KAPPLER REPORTS NO INTEREST IN MEAT. EGGS ARE CONSUMED. LONG TRADITION OF USE OF EGGS BY KALINA**
- **1930 TRIAL TO EXPLORE MEAT NOT SUCCESFULL**
- **1945 GEYSKES REPORTS KILLING**
- **EVERY YEAR / MARCH – AUGUST LOCAL FAMILIES COLLECT EGGS**
- **1961 WIA-WIA NR =PHYSICAL PROTECTION IN 1964 / 1966 CORRECTION BORDERS**
- **1964 ENFORCEMENT AND GUARDING OF NESTING BEACHES**
- **1963-1967 TRADE 80% GREENTURTLE NEST + 90% OLIVE RIDLEY NEST**
- **1969 GALIBI NR**
- **1969 LOCAL TOERISM (ECO-TOERISM CONCEPT) NESTING BEACHES MATAPICA & GALIBI**
- **ONGOING COLLECTION OF EGGS BY LOCAL COMMUNITY – BEST PROTECTION IS WISE USE.**
- **CONSUMPTION MAINLY BY JAVANESE IMMIGRANTS**
- **1974-1978 BREEDING EXPERIMENT**
- **1992 MARINE TURTLE CONSERVATION**
- **1997 GALIBI NR CONSULTATION COMMISSION**
- **1996 STIDUNAL**
- **2002 NO MORE COLECTION OF EGGS – MARINE TURTLE TOERISM**











TABEL 3. Eieren gelegd, verplaatst en geraapt en aantallen jonge schildpadjes

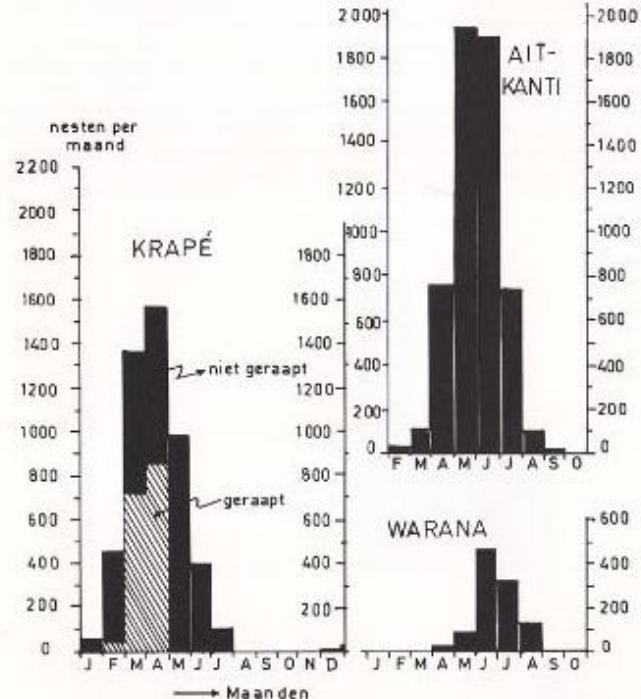
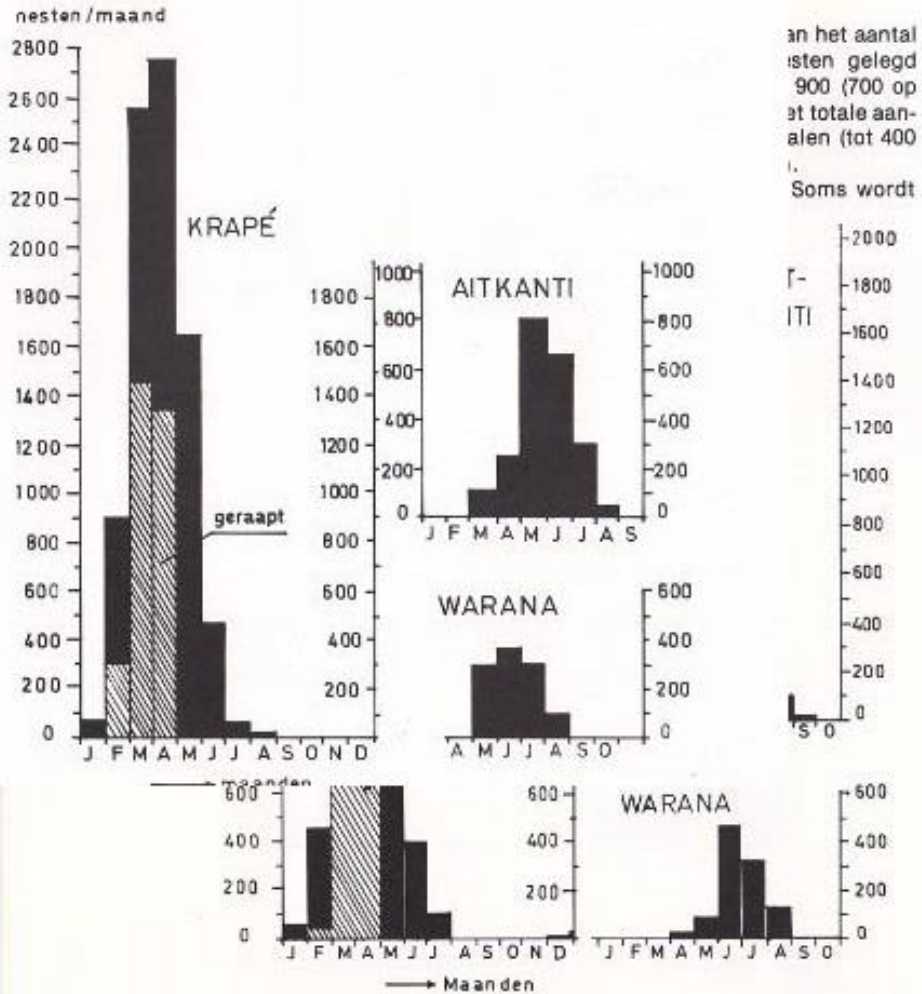
	aantal eieren gelegd			aant. krapé eieren geraapt voor consumptie 1000 x	aant. verkeerd gelegde eieren verplaatst naar strandwal of 'broedhuis' 1000 x			aant. eieren uitgebreed (natuurlijk + kunstmatig) 1000 x			aantal jongen naar zee (geschat) 1000 x		
	KRAPE	AITKANTI	JARANA		KRAPE	AITKANTI	WARANA	KRAPE	AITKANTI	WARANA	KRAPE	AITKANTI	WARANA
1971	794	24	185	417	80	10	26	370	23	183	270	7	100
1972	950	36	147	430	70	15	13	510	35	145	380	10	80
1973	910	76	103	540	68	24	4	371	72	102	275	25	60
1974	1.000	67	125	505	144	26	19	520	66	124	370	20	70
1975	498	138	124	237	77	35	18	260	136	123	205	48	70
1976	1.112	57	135	485	201	22	24	620	54	133	470	20	75
1977	684	473	120	228	158	121	32	450	465	117	335	170	65
1978	1.168	183	100	442	214	68	26	715	180	95	530	70	55
1971 - 1978	7.116	1.054	1.039	3.284	1.013	321	162	3.816	1.031	1.022	2.835	370	575

TABEL 2
Aantallen nesten en eieren per jaar in Suriname gelegd.

	1967	1968	1969	1970	1971	1972	1973	1974	1975	1976	1977	1978
A) <u>KRAPE</u>												
nesten Bigisanti	1025	750	780	840	950	1080	1033	1438	772	1650	1119	1706
nesten Galibi- stranden	?	4180	1680	2270	4885	5880	5425	5920	2780	6280	3610	6341
nesten Suriname tot.*	?	5000	2495	3115	5755	6885	6600	7465	3610	8080	4955	8465
eieren Sur.tot.(1000x)	?	690	334	430	794	950	910	1000	498	1112	684	1168
B) <u>WARANA</u>												
nesten Bigisanti	80	75	115	90	120	90	145	285	235	235	163	162
nesten Galibi- stranden	2750	3065	1485	1623	1450	1140	740	755	730	925	721	547
nesten Suriname tot.*	2875	3290	1665	1750	1595	1270	890	1080	1070	1160	1030	870
eieren Sur.tot.(1000x)	333	382	193	203	185	147	103	125	124	135	120	100
C) <u>AITKANTI</u>												
nesten Bigisanti	59	142	269	220	231	336	607	624	948	550	2559	1251
nesten Galibi- stranden	10	10	9	13	43	39	274	142	636	110	2607	469
nesten Suriname tot.*	90	200	305	255	285	380	900	785	1625	670	5565	2160
eieren Sur.tot.(1000x)	7,5	17	26	21,5	24	36	76	67	138	57	473	183
D) <u>KARET</u>												
nesten Bigisanti - Galibi	10	4	10	4	15	13	8	30	12	45	?	10

*) Suriname totaal = Bigisanti + Galibi + geschat aantal gelegd buiten stranden waar wordt geteld (o.a. W. van Matapica, Oranjekreek en W. van Eilanti).

FIG. 9 AANTALLEN GELEGDE NESTEN PER MAAND GEDURENDE 1978.



FIGUUR 8 AANTALLEN GELEGDE NESTEN PER MAAND GEDURENDE 1977

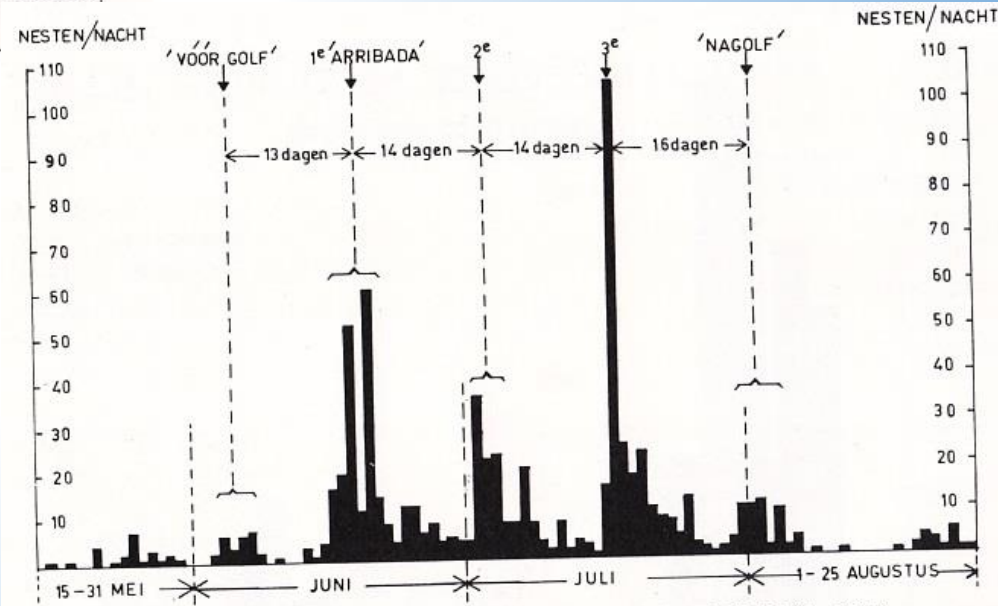


FIG.10 WARANA NESTEN GELEGD OP EILANTI SEIZOEN 1976

Thank You